

TOTAL STOP MD CLASS MD Section 07240

MasterFormat 2004 07-24-19

Adhered Drainage EIFS With Roller Applied Membrane AMERICA'S EIFS AND STUCCO COMPANY!

TOTAL STOP MD

Class MD Adhered
Drainage EIFS

Framing

Approved
Sheathing

Total Stop RA

Total Wall
Adhesive

Total Wall
EPS Foam

Total Mesh
(embedded in base coat)

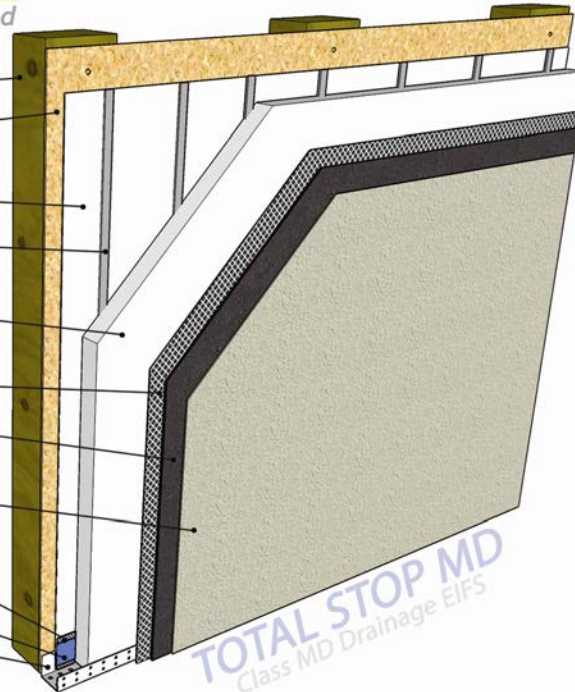
Total Wall
Base Coat

Total Wall
Finish Coat

Total Mesh

Total Flash

Drainage Track



The **Total Stop MD** system is a moisture-drainable Class MD EIFS that utilizes Total Stop RA, a roller or spray applied liquid membrane as a moisture barrier with vertical ribbons of adhesive.

It is used in both commercial and residential applications.

This system is eligible for a Total Wall system warranty when installed by a Registered Total Wall Applicator.

Layer 1- Substrate

Approved substrates such as: masonry, brick, concrete, concrete block and stucco may be used. Approved sheathings are: cement board, siliconized-core gypsum, exterior grade plywood, oriented strand board, exterior grade gypsum or other sheathings as approved, in writing, by Total Wall, Inc.

Layer 2- Moisture Barrier

The moisture barrier used in this system is Total Wall Total Stop RA, a roller or spray applied liquid membrane.

Layer 3- Attachment

Approved adhesives are Total Wall T2000 Base Coat or Total Wall Foam N' Base Coat ES. Applying the adhesive in a vertical ribbon pattern with a notched trowel creates the drainage plane.

Layer 4- Rigid Insulation

The approved rigid insulation board must be 1 lb per cubic foot Expanded Polystyrene (EPS) board manufactured in accordance with Total Wall specifications and meeting ASTM C578 Type I Class A requirements. The EPS boards are attached with vertical ribbons of adhesive.

Layer 5- Base Coat and Reinforcing Mesh

Approved base coats are T-2000 Base Coat, Total EZ Base NCB (Non-Cement Base), and Total Foam N' Base Coat ES. There are 5 grades of reinforcing meshes available: Standard 4 oz, Enhanced 6 oz, Intermediate 11 oz, High Impact 15 oz, and Ultra High Impact 20 oz. Both High Impact and Ultra High Impact require a second layer of Standard 4 oz reinforcing mesh.

Layer 6- Finish Coat

Total Wall 100% acrylic based, synthetic finishes are very high quality and are available in Premier and Journeyman grades, in eight different textures. Total Wall pre-mixed synthetic finishes can be tinted to match virtually any color.