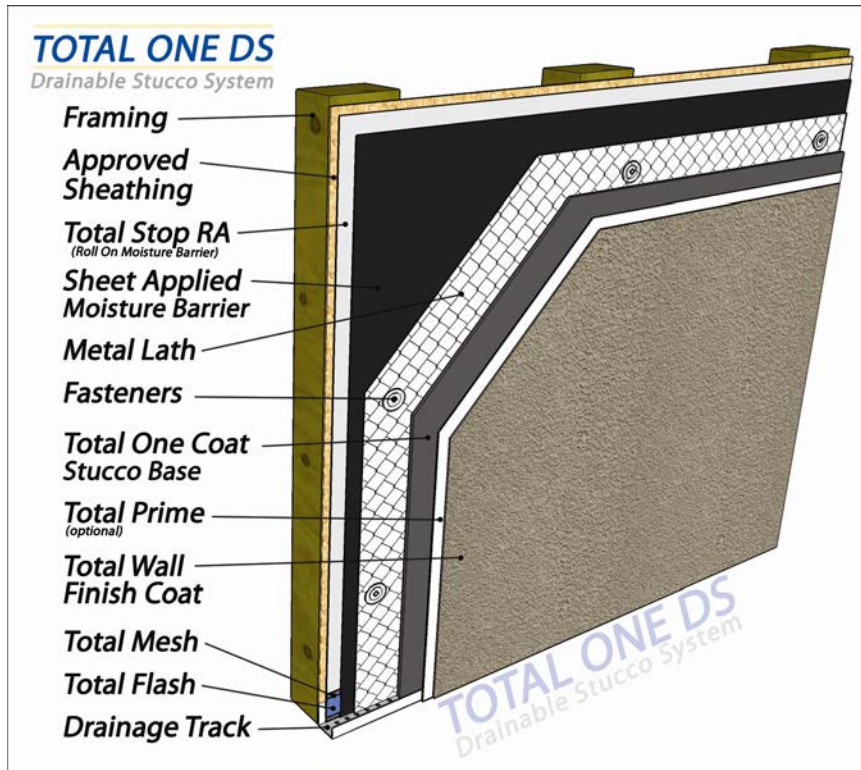


## TOTAL ONE DS □ STUCCO SYSTEM □ Section 09220 MasterFormat 2004 09-24-23

Drainable Hard Coat Stucco System

AMERICA'S EIFS AND STUCCO COMPANY!



The **Total One DS** system is a premium drainable hard coat stucco system. It is designed for maximum performance and weather protection and is backed by an extended warranty.

It is used in both commercial and residential applications.

This system is eligible for a Total Wall extended performance warranty when installed by a Total Wall qualified applicator.

### **Layer 1- Substrate**

Approved substrates are wood or steel framing with maximum span of 16" O.C. And approved sheathings are: wood, gypsum sheathing, cement board or composite sheathing. The masonry may be raw or coated existing stucco, CMU, concrete or brick.

### **Layer 2- Liquid applied moisture barrier**

Total Stop RA is a breathable, roller or spray applied membrane with integral mold and mildew fighting agents.

### **Layer 3- Sheet applied moisture barrier**

Approved sheet applied moisture barriers are: Tyvek StuccoWrap, RainDrop HouseWrap, Weather Trek, Vortec Drainage Barrier, Grade D building paper, Standard house wrap or Paper backed lath.

### **Layer 4- Metal stucco base reinforcement**

Metal lath, such as self-furring galvanized 2.5 lb diamond lath or 3.4 ribbed lath, or galvanized stucco netting with 1" or 1.5" openings used for reinforcement is mechanically fastened.

### **Layer 5- Stucco base**

Total One Coat Stucco (with optional Total Wall Acrylic Additive) is used to create scratch and brown coats contained in the Portland cement stucco base.

### **Layer 6- Finish Coat**

Total Wall 100% acrylic based, synthetic finishes are very high quality and are available in Premier and Journeyman grades, in eight different textures. Total Wall pre-mixed synthetic finishes can be tinted to match virtually any color.