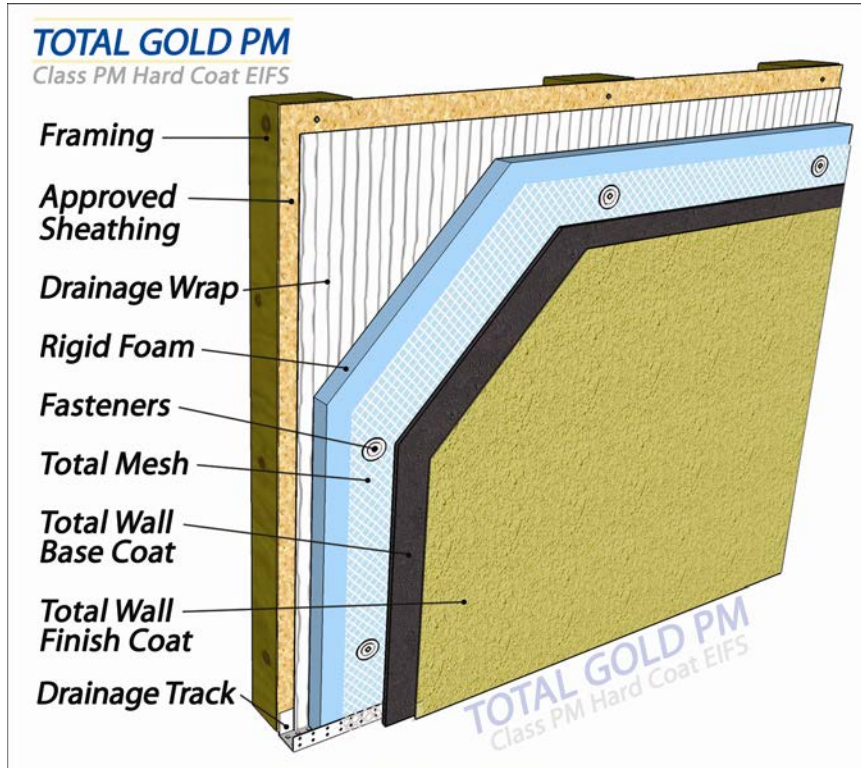


TOTAL GOLD PM CLASS PM

Section 07240
MasterFormat 2004 07-24-16

Class PM Hard Coat EIFS

AMERICA'S EIFS AND STUCCO COMPANY!



The **Total Gold PM** system is a class PM Hard Coat EIFS which uses Extruded Polystyrene (XPS) rigid insulation boards and can be installed over virtually any substrate.

It is used in both commercial and residential applications.

This system is eligible for a Total Wall system warranty when installed by a Total Wall qualified applicator.

Layer 1- Substrate

Approved substrates are masonry, brick, concrete block, concrete and stucco. Approved sheathings are: exterior gypsum, plywood, cement board, OSB, siliconized-core gypsum sheathing, or as otherwise approved by Total Wall in writing.

Layer 2- Moisture Barrier

The use of an approved moisture barrier is required for all residential frame construction with moisture sensitive sheathing or framing. Approved moisture barriers are Tyvek StuccoWrap, RainDrop, Weather Trek or alternate drainable proprietary moisture barrier wrap.

Layer 3- Rigid insulation

Rigid insulation board shall be 2 lb per cubic foot density Extruded Polystyrene (XPS) board meeting ASTM C578 Type IV requirements, have an R-value of 5.0 per inch, be in either 4' x 8' or 2' x 8' sheets and have a thickness not less than 1" and not greater than 4".

Layer 4- Fasteners, Reinforcing Mesh, SL Gold Base Coat and Trim Accessories

This system is mechanically fastened. The ULP-Plate and screw fasteners are installed through Total Hard Coat Reinforcing Mesh. Total Wall Pre-bagged Two Coat Hard Coat Base Coat or Total Wall Field Mixed Two Coat Hard Coat Base Coat is utilized with this system. Various trim accessories are utilized. Drainage track is used when the system is installed over a moisture sensitive substrate, such as OSB, plywood, exterior gypsum or wood framing.

Layer 5- Finish Coat

Total Wall 100% acrylic based, synthetic finishes are very high quality and are available in Premier and Journeyman grades, in eight different textures. Total Wall pre-mixed synthetic finishes can be tinted to match virtually any color.