

## TOTAL DIRECT DA

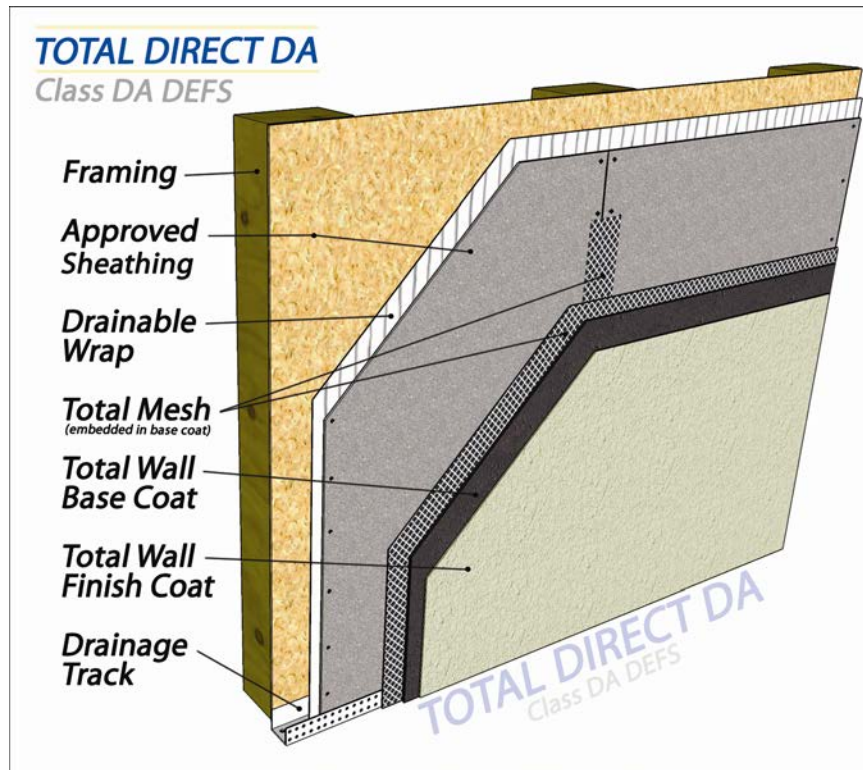


**Section 09220**  
Masterformat 2004 09-24-23



Total Wall EIFS and Stucco Systems

**AMERICA'S EIFS AND STUCCO COMPANY!**



The **Total Direct DA** system is a moisture drainable system that uses a thin stucco veneer applied directly over an approved sheathing.

It is used in both commercial and residential applications.

This system is eligible for a Total Wall system warranty when installed by a Total Wall qualified applicator.

### Layer 1- Framing and Sub-sheathing

Approved framing is steel or wood.

### Layer 2- Moisture Barrier

Approved moisture barriers are Tyvek StuccoWrap, RainDrop, Weather Trek, Vortec Drainage Barrier, Total Stop RA or as otherwise approved by Total Wall in writing.

### Layer 3- Approved Sheathing

Approved sheathing for areas that are exposed to the elements must be cement board, such as Durock, Permaplast or as otherwise approved by Total Wall in writing. For areas that are protected such as a soffit or portico, a siliconized core gypsum board is also acceptable, including DensGlass, Fiberock, GlasRoc, EXP sheathing or as otherwise approved by Total Wall in writing.

### Layer 4- Base Coat and Reinforcing Mesh

Approved base coats are T-2000 Base Coat, Total EZ Base NCB (Non-Cement Base), and Total Foam N' Base Coat ES. Total Wall 4-oz standard mesh is used with this system.

### Layer 5- Finish Coat

Total Wall 100% acrylic based, synthetic finishes are very high quality and are available in Premier and Journeyman grades, in eight different textures. Total Wall pre-mixed synthetic finishes can be tinted to match virtually any color.