

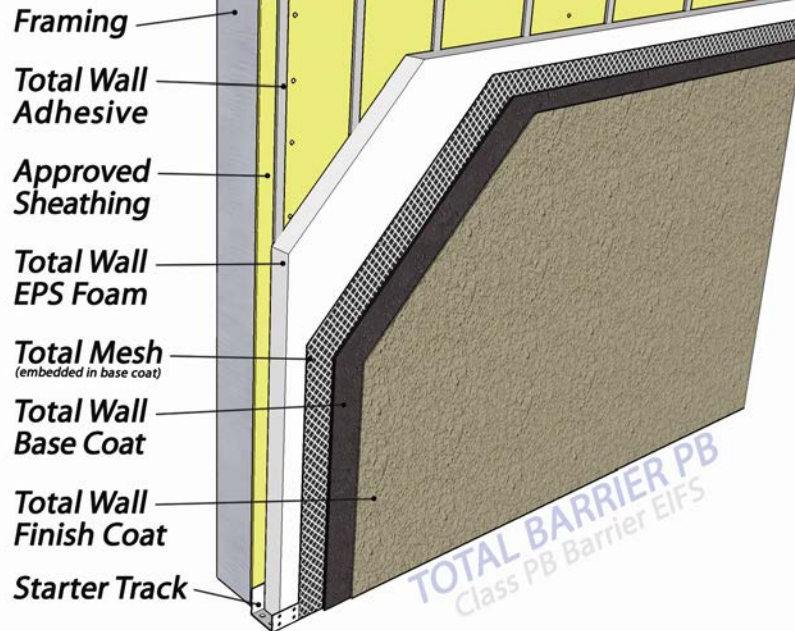
**TOTAL BARRIER PB** □ CLASS PB □ Section 07240  
MasterFormat 2004 07-24-13

Class PB Barrier EIFS

AMERICA'S EIFS AND STUCCO COMPANY!

**TOTAL BARRIER PB**

Class PB Barrier EIFS



The **Total Barrier PB** system is a Soft Coat barrier Class PB Exterior Insulated and Finish System. It is suitable for use over non-moisture sensitive substrates.

It is primarily used in commercial applications.

This system is eligible for a Total Wall system warranty when installed by a Registered Total Wall Applicator.

**Layer 1 - Substrate**

Approved masonry substrates are: brick; concrete block, concrete; stucco. Approved sheathings are: Cement board; Aquatough; Permaboard; GlasRoc; National Gypsum E2XP; DensGlass, or other substrates as approved, in writing, from Total Wall, Inc.

**Layer 2 - Rigid Insulation**

The approved rigid insulation board must be 1 lb per cubic foot Expanded Polystyrene (EPS) board manufactured in accordance with Total Wall specifications and meeting ASTM C578 Type I Class A requirements. The EPS boards are attached with vertical ribbons of adhesive.

**Layer 3 - Attachment**

Approved adhesives are Total Mastic Adhesive, T-2000 Base Coat, Total EZ Base NCB (Non-Cement Base), and Total Foam N' Base Coat ES. Mechanical fasteners are optional for this system and required when attaching to chalky or flaking surfaces.

**Layer 4 - Base Coat and Reinforcing Mesh**

Approved base coats are T-2000 Soft Coat Base Coat, Total EZ Base NCB (Non-Cement Base), and Total Foam N' Base Coat ES. There are 5 grades of reinforcing meshes available: Standard 4 oz; Enhanced 6 oz; Intermediate 11 oz; High Impact 15 oz; and Ultra High Impact 20 oz.

Both High Impact and Ultra High Impact require a second layer of Standard 4 oz reinforcing mesh.

**Layer 5 - Finish Coat**

Total Wall 100% acrylic based, synthetic finishes are very high quality and are available in Premier and Journeyman grades, in eight different textures. Total Wall pre-mixed synthetic finishes can be tinted to match virtually any color.