

America's EIFS & Stucco Company!



Total System Selection

- Class MD EIFS
- Class PB EIFS
- Class DA DEFS
- Class PM EIFS
- Class PI EIFS
- ICF Coatings
- Stucco Systems
- Foundation Systems
- Interior Coatings
- Architectural Shapes
- Pre Fab Panels



Experience The Difference!

- In-Depth Training Programs!
- Customized Specifications!
- Next Day Service!
- Custom Color Matching!
- Extensive Warranties!
- Green/LEED Compliant!

TOTAL WALL

888.702.9915
totalwall.com

TOTAL WALL

America's EIFS And Stucco Company!



EXPERIENCE THE DIFFERENCE!

TOTAL WALL's founder started manufacturing and applying EIFS and Stucco products over 30 years ago in 1979 and has dedicated his lifetime career to the EIFS and Stucco Industry. TOTAL WALL currently operates and distributes coast to coast from their modern 75,000 sqft manufacturing and distribution facility located in Wisconsin.

With old fashioned values based on commitment to our customer, service and quality at the heart of our operation, TOTAL WALL offers an enhanced product line including EIFS, Stucco, ICF Coatings, Foundation Insulation Panels and Coatings, Interior Coatings, Architectural Shapes, and Pre Fab Panels. TOTAL WALL is truly America's EIFS and Stucco Company!

● **SUPERIOR PRODUCT CHEMISTRY**



Centrally located in the Midwest, bitter cold and dramatic freeze thaw cycles have provided an ideal setting for the formulation and testing of our field proven product line throughout our 30 year history. TOTAL WALL'S commitment to this outstanding product quality has always started with superior product chemistry. The raw materials that go into Total Wall's products is truly what makes them one of the best products available on the market today!

- We use the highest levels of bond promoter allowed by law;
- Our patented DPR (Dirt Pickup Resistance) comes standard in all of our coatings;
- We use DCOIT preservatives and we do not use phosphates.
- Our coatings are all low VOC, and low toxicity.

● **FAST & ACCURATE COLOR MATCHING**



Colors and textures are some of the most important components of any project. At Total Wall we realize that customers need their color matching and samples done yesterday with spot on accuracy. The seasoned professionals in our color and sample departments utilize advanced proprietary color matching technology to assure that colors are matched with swift precision.

- DATACOLOR color matching;
- On-line database of cross-matched color formulas to all national brands of paints and coatings;
- Able to custom match virtually any color from any sample or color chart.

● TOTAL TRAINING PROGRAMS



Visit TotalWall.com
for more info on
Total University!

- **Applicators** Becoming a listed Total Wall Applicator has never been easier! Our on-site and web based training programs are unique in the industry for their quality, and solid educational content.
- **Distributors** Total Wall's distributor training programs provide engaging product education with a focused outline on how to best present Total Wall EIFS & Stucco to potential customers in your specific market.
- **Architects** Total Wall's comprehensive interactive website and AIA training programs, along with Specification Binders, CDs, and Flash Drives makes Total Wall an excellent resource and product choice for every specifier.

● MARKETING & CUSTOMER SUPPORT



TOTAL WALL has the most appealing and comprehensive sample and literature program in the market today. All the samples offered are Totally Free of charge and are in stock and ready to ship.

- Total Systems Index Binder: features detailed SPECS and system information;
- Color Selections Binder: features large 8" x 11" finish coat color samples;
- Southwest Color Selections Binder: features large 8" x 11" finish coat samples;
- Texture Selections Binder: features large 8" x 11" texture samples;
- Gemstone Selections Binder: features large 8" x 11" Gemstone color samples;
- Color and Texture Decks: offer smaller versions of the Color and Texture binders;
- Custom Samples, Mini Displays, Color Charts and more!



● HIGHLY RECOGNIZED WARRANTY PROGRAMS



At Total Wall, we stand behind our commitment to exceptional product quality and service by offering extensive product and system warranties.

- Wide variety of comprehensive warranty options available;
- On site project inspections;
- Third party inspections;

● FRIENDLY AND RESPONSIVE CUSTOMER SERVICE



With over three decades of EIFS and Stucco industry experience, our seasoned professionals provide extensive sales and technical support, excellent follow-up and the personal attention and care you deserve as a customer.

- Competent and expedient customer service phone support;
- Extensive Technical Support via phone, fax, website and email;
- On-site support and training available free of charge;
- Webinar and on-line training available free of charge;
- Extensive library of training and support materials;
- Nationwide network of technical support representatives.

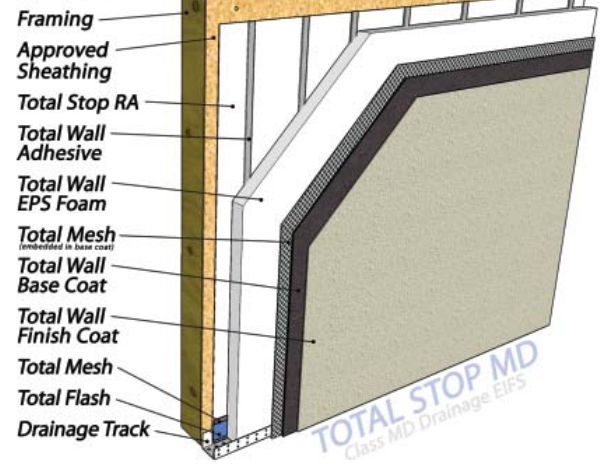
TOTAL STOP MD ◦ Class MD Drainage EIFS

A moisture drainable EIFS that uses Total Stop RA, a liquid-applied membrane moisture barrier to seal and protect the substrate from water intrusion. This system can be used on any substrate, including wood or gypsum sheathings, and is installed without mechanical fasteners, thereby eliminating penetrations through the moisture barrier and effectively improving installation performance.

Total Stop MD is ideal for use on any residential or commercial project demanding advanced moisture drainable design protection.

- **Energy Efficiency:** R 2.85 to R 15.2 (3/4" to 4" thickness)
- **Substrates:** Plywood, OSB, gypsum, masonry, cement board
- **Design Elements:** Requires no control joints, can employ reveals and trims, can correct minor wall deflections, easily upgraded impact resistance using increased mesh weight
- **Sustainability:** Low VOC, low toxicity, recycled content

TOTAL STOP MD
Class MD Adhered
Drainage EIFS



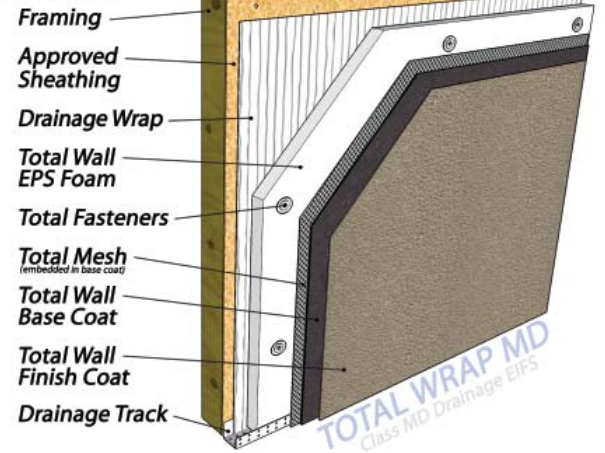
TOTAL WRAP MD ◦ Class MD Drainage EIFS

With over 15 years of proven performance history, Total Wrap MD is a moisture drainable EIFS utilizing a proprietary self-draining sheet-applied moisture barrier to permit any incidental water that enters the wall system to safely exit.

Total Wrap MD is ideal for use on any residential or commercial project employing wood or gypsum sheathings that will benefit from energy savings, flexible system design and proven moisture drainable design protection.

- **Energy Efficiency:** R 3.8 to R 15.2 (1" to 4" thickness)
- **Substrates:** Plywood, OSB, and all gypsum sheathings
- **Design Elements:** Requires no control joints, can employ reveals and trims, can correct minor wall deflections, can easily upgrade impact resistance using increased mesh weight
- **Sustainability:** Low VOC, low toxicity, recycled content

TOTAL WRAP MD
Class MD Fastened
Drainage EIFS



TOTAL BARRIER PB ◦ Class PB Barrier EIFS

A face-sealed or barrier class of EIFS that is utilized over non-moisture sensitive substrates and wall systems. The Total Barrier PB can be mechanically fastened or adhered to approved substrates.

Total Barrier PB can be used on any residential or commercial project with a non-moisture sensitive substrate that will benefit from energy savings and flexible system design.

- **Energy Efficiency:** R 2.85 to R 15.2 (3/4" to 4" thickness)
- **Substrates:** Siliconized-core gypsum sheathing or cement board on steel frame or masonry walls
- **Design Elements:** Requires no control joints, can employ reveals and trims, can correct minor wall deflections, can easily upgrade impact resistance using increased mesh weight
- **Sustainability:** Low VOC, low toxicity, recycled content

TOTAL BARRIER PB
Class PB Barrier EIFS



TOTAL DIRECT ICF o ICF Coating System

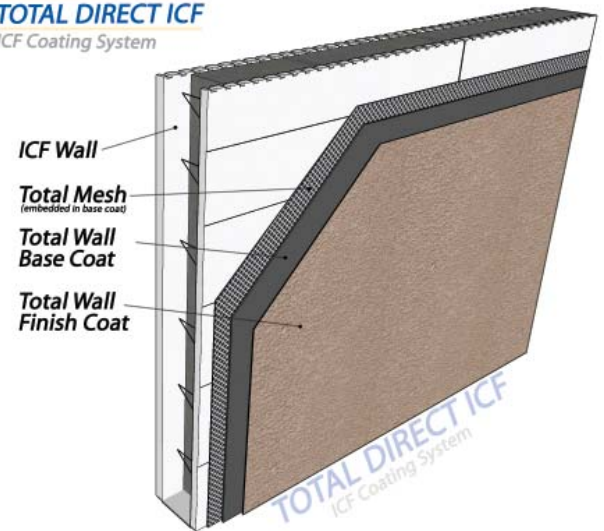
The Total Direct ICF system is the ultimate combination of rugged durability and beautiful colors and textures.

Total Mesh embedded in a highly crack resistant base coat provides a sturdy base that chemically bonds to the ICF foam. The Total Wall Finish Coat is then applied to provide the chosen color and texture.

This system is ideal for any ICF structure where a natural masonry look is desired along with an option for architectural enhancements, such as quoins, trim bands, reveals and arches.

- o **Energy Efficiency:** Typical R22
- o **Substrates:** ICF (Insulated Concrete Form) Walls
- o **Design Elements:** Requires no control joints, can employ reveals and trims, can easily upgrade impact resistance using increased mesh weight
- o **Sustainability:** Low VOC, low toxicity, recycled content

TOTAL DIRECT ICF
ICF Coating System



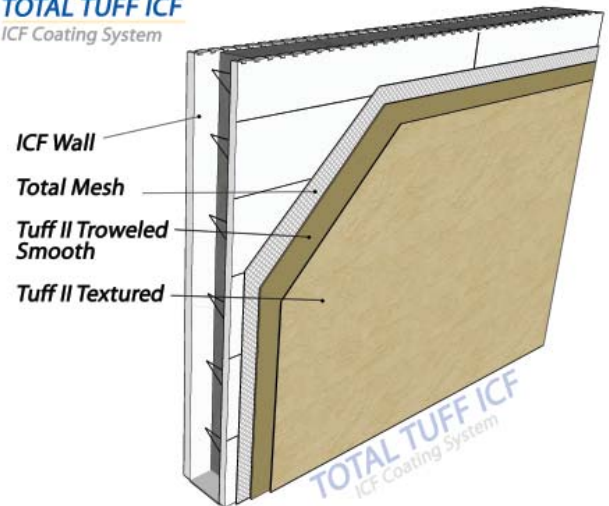
TOTAL TUFF ICF o ICF Coating System

Total Tuff ICF is where ease of application meets rock solid crack resistance and durability. Tuff II is a pre-mixed 100% acrylic that serves as both a base coat and a finish coat.

Simply apply Total Wall Sticky Mesh to a dust-free exterior ICF foam surface. Next, open a pail of Tuff II and you're ready to add color, texture and durable protection to your ICF wall. The first coat of Tuff II is trowel-applied and the second coat or texture pass can be trowel-applied, sprayed with a hopper gun or brushed. Tintable to a wide variety of colors and extremely flexible and crack resistant, Tuff II is always ready to perform on any ICF Wall!

- o **Energy Efficiency:** Typical R 22
- o **Substrates:** ICF (Insulated Concrete Form) walls
- o **Design Elements:** Requires no control joints, can employ reveals and trims, can easily upgrade impact resistance using increased mesh weight
- o **Sustainability:** Low VOC, low toxicity, recycled content

TOTAL TUFF ICF
ICF Coating System



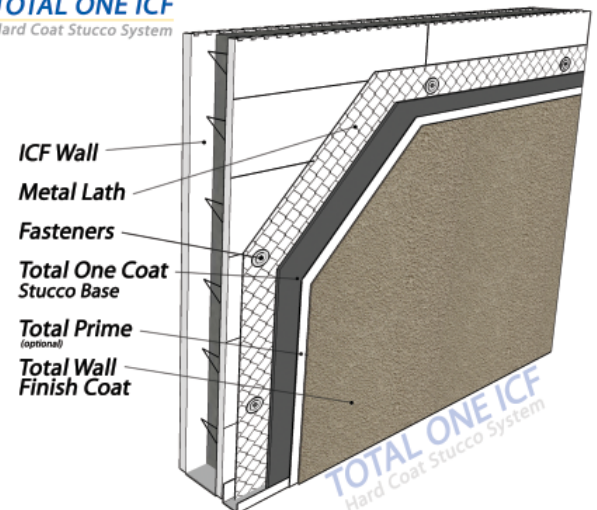
TOTAL ONE ICF o ICF Coating System

There's nothing like the feel, the look and protection of a hard coat Portland cement stucco system. This Portland cement-based hard coat stucco system is designed specifically for Insulated Concrete Form construction.

Self-furring, galvanized metal lath is mechanically fastened directly to the ICF ties. Next, Total One Coat Stucco provides the durable Portland cement stucco based in the specified thickness. The Total Wall Finish Coat is then applied to provide the chosen color and texture. This system is ideal for any ICF structure where a natural masonry look is desired.

- o **Energy Efficiency:** Typical R 22
- o **Substrates:** ICF (Insulated Concrete Form) walls
- o **Design Elements:** Requires control joints every 144 sq. ft. and in accordance with standard lath and plastering practices, can employ reveals and trims
- o **Sustainability:** Low VOC, low toxicity, recycled content

TOTAL ONE ICF
Hard Coat Stucco System

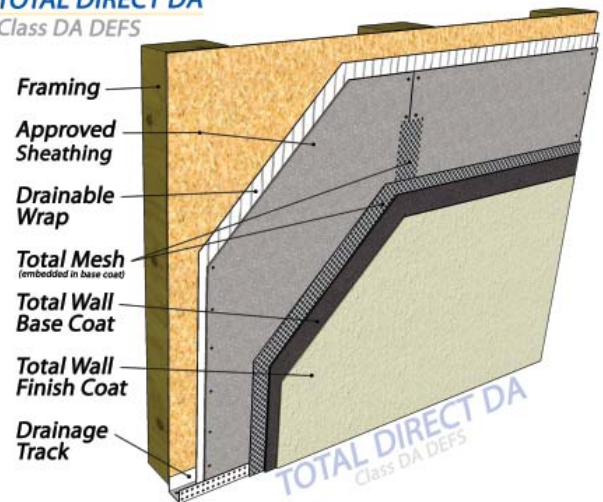


TOTAL DIRECT DA ○ Class DA DEFS

Total Direct DA is the fastest and most economical way to obtain drainable hard coat stucco performance with the ease of application of sheathing plus a thin-coat resilient lamina. Total Direct DA does not use a rigid foam insulation, so the system remains breathable and also retains high impact resistance from the sheathing. Available in unlimited colors and a variety of textures, Total Direct DA provides a durable and impact resistant hard coat performance with the look and feel of natural masonry. Total Direct DA can be used on both exterior and interior walls, as well as soffit, portico and overhang ceiling areas.

- **Energy Efficiency:** Typical R 1.5 based on average combined sheathing layers alone.
- **Substrates:** Frame construction interior or exterior walls and ceilings, masonry walls.
- **Design Elements:** Requires control joints as specified by sheathing manufacturer, can employ reveals and trims, inherently high impact resistance.
- **Sustainability:** Low VOC & toxicity, employs recycle content.

TOTAL DIRECT DA
Class DA DEFS



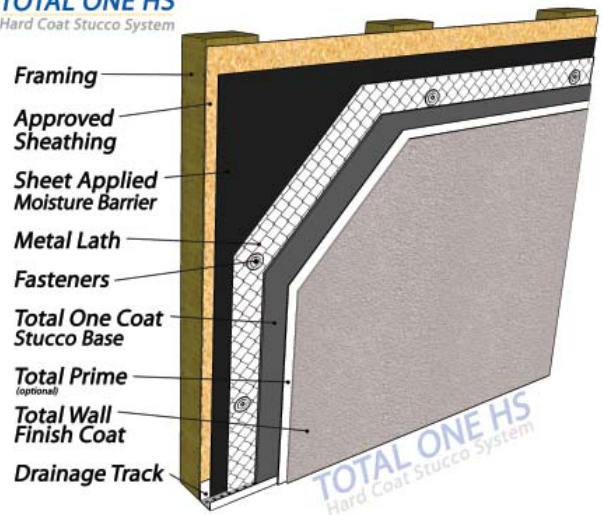
TOTAL ONE HS ○ Hard Coat Stucco System

Total One HS is our traditional hard coat Portland cement stucco system which incorporates our time-saving Total One Coat stucco base and our high performance Total Wall Synthetic Finish Coat. Total One HS can be direct-applied over any raw masonry substrate, or by adding a moisture barrier and metal lath, Total One HS can be applied over any sheathing, siding or painted masonry substrate.

Available in unlimited colors and a variety of textures, Total One HS provides a durable and impact resistant natural masonry exterior cladding system. This system can easily employ architectural enhancements, such as quoins, trim bands, reveals and arches.

- **Energy Efficiency:** Typical R 1.5 based on average combined sheathing and stucco layers.
- **Substrates:** any exterior frame/sheathing or masonry wall.
- **Design Elements:** Requires use of control joints, can employ reveals and trims, high impact resistance
- **Sustainability:** Low VOC, low toxicity, employs recycle content.

TOTAL ONE HS
Hard Coat Stucco System



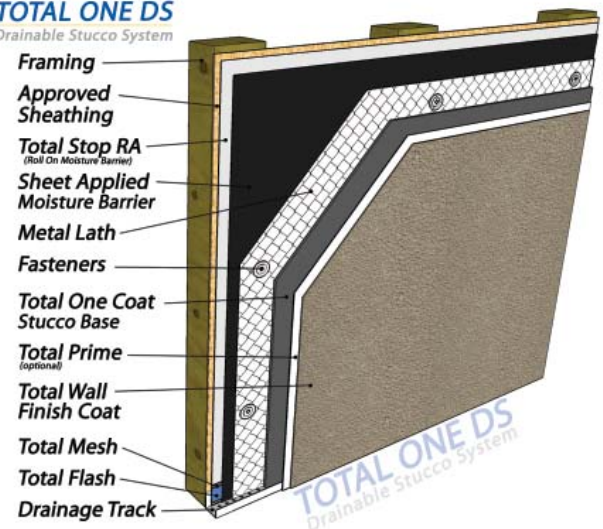
TOTAL ONE DS ○ Drainable Stucco System

Total One DS is our premium hard coat Portland cement stucco system, which incorporates our Total Stop RA liquid-applied moisture barrier, a designed drainage plane, a time-saving Total One Coat stucco base and our highest performance Total Wall Synthetic Finish Coat.

Total One DS can be applied over any frame and sheathing substrate and is eligible for an extended Total Wall system warranty. Available in unlimited colors and a variety of textures, Total One DS provides a premium performance, highly durable and impact resistant natural cladding system.

- **Energy Efficiency:** Typical R 1.5 based on average combined sheathing and stucco layers.
- **Substrates:** any exterior frame/sheathing wall substrate
- **Design Elements:** Requires use of control joints, two layer of moisture barrier, full designed drainage plane, can employ reveals and trims, high impact resistance
- **Sustainability:** Low VOC, low toxicity, employs recycle content.

TOTAL ONE DS
Drainable Stucco System



TOTAL SL GOLD PM ○ Class PM EIFS

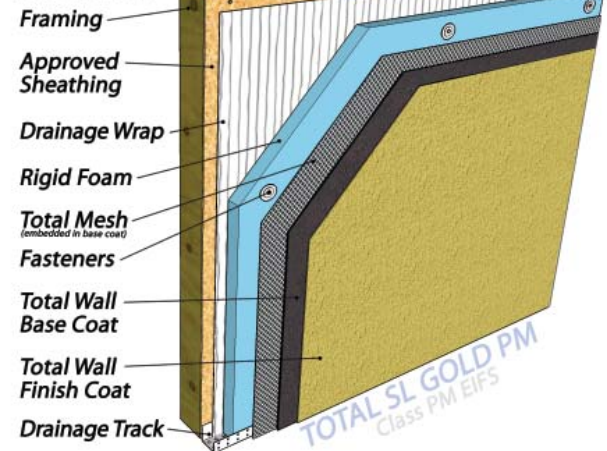
Total SL Gold PM combines the R-value and impact advantages of 2-lb density extruded polystyrene rigid insulation board, including a designed drainage plane, with the economy and design advantages of a thin coat lamina.

Total SL Gold PM can be applied over any frame and sheathing substrate or masonry substrate. Available in unlimited colors and a variety of textures, Total SL Gold PM provides an energy efficient and impact resistant exterior cladding system with the look of natural masonry. This system can easily employ architectural enhancements, such as quoins, trim bands, reveals and arches.

- **Energy Efficiency:** Typical R5 per inch.
- **Substrates:** Any exterior frame and sheathing or masonry.
- **Design Elements:** Requires use of control joints beyond 50 lineal feet of wall, includes moisture barrier and designed drainage plane, can employ reveals and trims, medium-high impact resistance
- **Sustainability:** Low VOC & toxicity, employs recycle content

TOTAL SL GOLD PM

Class PM Seamless Hard Coat EIFS



TOTAL GOLD PM ○ Class PM Hard Coat EIFS

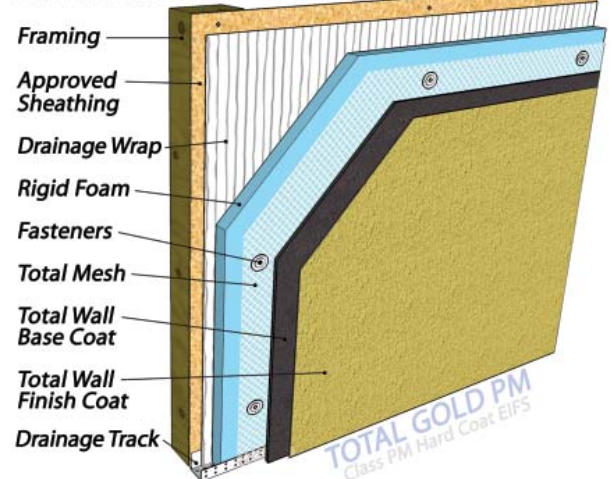
Total Gold PM is our traditional Class PM EIFS, which consists of a hard coat stucco lamina mechanically fastened over 2-lb density extruded polystyrene rigid insulation board. Total Gold PM includes a designed drainage plane and can be installed over any frame and sheathing substrate or masonry substrate.

Available in unlimited colors and a variety of textures, Total Gold PM provides good energy efficiency and exceptional impact resistance as an exterior cladding system with the look of natural masonry.

- **Energy Efficiency:** Typical R5 per inch
- **Substrates:** Any exterior frame and sheathing or masonry.
- **Design Elements:** Requires use of control joints, includes moisture barrier and designed drainage plane, can employ reveals and trims, high impact resistance
- **Sustainability:** Low VOC & toxicity, employs recycle content

TOTAL GOLD PM

Class PM Hard Coat EIFS



TOTAL LITE PI ○ Class PI EIFS

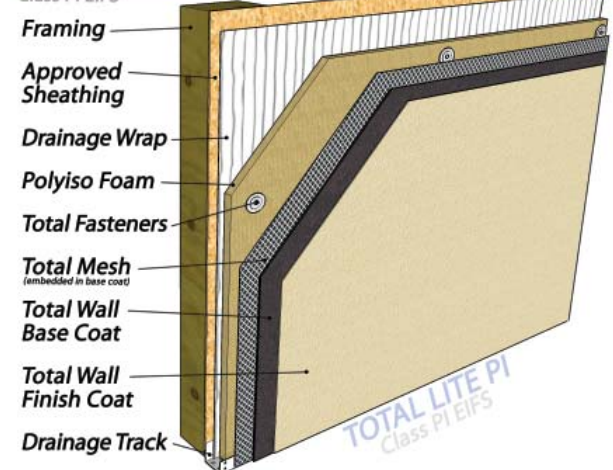
Total Lite PI is our Class PI EIFS, which uses poly isocyanurate (Quik-R) rigid foam insulation board for exceptional R-value and strength. Total Lite PI is installed over a sub-sheathing or masonry substrate and incorporates a designed drainage plane.

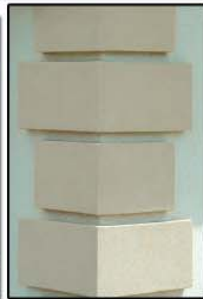
By using a thin coat lamina, Total Lite PI avoids the need for control joints and can be installed over any frame and sheathing substrate or masonry substrate. Available in unlimited colors and a variety of textures. Total Lite PI is a unique and versatile coating system that can be used on both commercial and residential structures.

- **Energy Efficiency:** Typical R6 per inch
- **Substrates:** Total SL Gold PM can be used on any exterior frame and sheathing or masonry wall substrate.
- **Design Elements:** Does not require control joints, includes moisture barrier and designed drainage plane.
- **Sustainability:** Low VOC, low toxicity, employs recycle content.

TOTAL LITE PI

Class PI EIFS





TOTAL SHAPES

Total Wall offers an endless variety of architectural shapes designed to enhance and add value to any commercial or residential project!

All Total Shapes are custom cut to exact specifications using our lazer foam cutting equipment.

All Total Shapes are professionally wrapped and packaged to assure safe shipping.

Total Shapes are available uncoated or pre-finished with extremely durable Total Wall base, mesh and finish coats.

Request a Free Total Shapes Catalog at totalwall.com!

TOTAL PANELS

Apartment Buildings



Hotels/Motels



Insulated Exterior Wall Panels are becoming increasingly popular and Total Wall continues to produce some of the most durable and attractive varieties available!

Total Wall will fabricate any type of panel to your specifications!



Wide variety of colors, textures & thicknesses are available!



Window Enclosures



FAUX COATINGS

PLASTONE-PLASTAIN

tuscan style finish systems

PLASTONE - PLASTAIN

Superior product chemistry and legendary Total Wall quality are mixed to perfection in each pail of Plastone & Plastain. Dazzle your customers with gorgeous old world tuscan and antique brick, and weathered stucco textures.

Create historic and custom facades quickly and easily with simple hand tools & no messy mixing! Achieve amazing marbled textures, and a variety of gorgeous and timeless faux effects limited only by your imagination!

*Old World Charm
Meets New World Chemistry!*



*Plastone & Plastain: faux finish
the fast and easy way!*

INTERIOR COATINGS

Variety of Colors & Textures!

Finishing interior space has never been easier!



*Applies easily with an airless sprayer!
Textures with a trowel or squeegee!*

TOTAL TEX

Total Tex is a revolutionary interior product that replaces priming, texture, and painting with one durable, scrub resistant, coating!

- Pre-Mixed / Pre-Colored
- Multiple Textures
- Easy To Apply
- Reduces Labor By 50%
- Strong & Durable
- Scrub Resistant



Economical! No Mixing! Cuts Labor! TOTAL TEX Makes Sense!

FOUNDATION INSULATION COATINGS



TUFF II

- Pre-Mixed - 100% Acrylic
- Multiple Colors & Textures
- Coats A Variety Of Surfaces



Tuff II is a thick trowel-grade coating that is easy to apply over rigid foam, ICF, concrete, masonry block, cement board, drywall and other surfaces. A durable & attractive stucco texture has never been easier!

FLEXCOAT



- Pre-Mixed - 100% Acrylic
- Multiple Colors & Textures
- Coats A Variety Of Surfaces



Flexcoat is a brush-grade highly textured coating which provides color and UV resistance to rigid foam insulation, ICF's, masonry block, cement board, drywall and other surfaces.

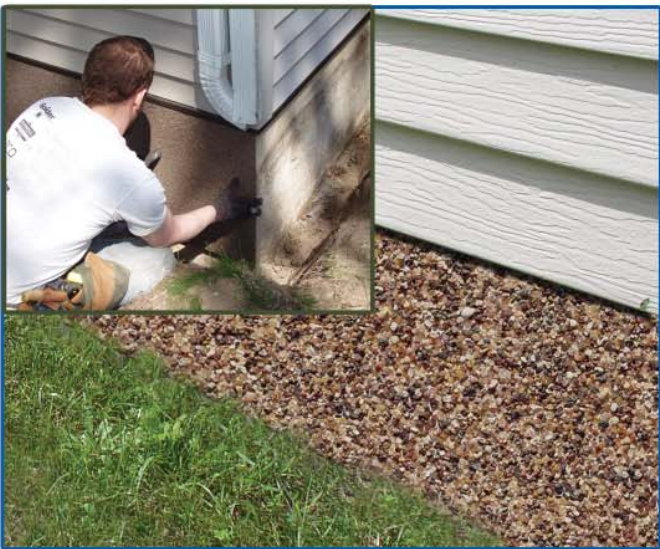
FOUNDATION INSULATION PANELS

FP ULTRA LITE

Foundation Insulation Panel

Reduce Heating And Cooling Costs Over 22%

Durable - Attractive And Easy To Apply!



These durable Foundation Insulation Panels will insulate and cover unattractive exposed foundations with a durable and attractive textured finish!

Designed for speed and efficiency these panels are easily cut with a utility knife and adhered with rigid foam construction adhesive and/or fasteners.



Superior Finish Coat

You don't need a microscope to see superior product chemistry! Just pick up one of our samples and bend, twist, flex, and roll it up!

You can see for yourself the extreme durability, flexibility and crack resistance that is in Total Wall!

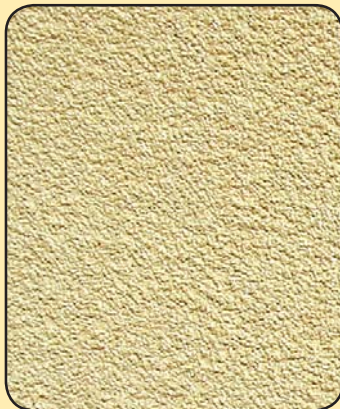
On top of that, we include a patented DPR (Dirt Pickup Resistance) and Mold and Mildew Inhibitors standard in every pail! Why pay extra when you can get it for free?

With Total Wall Finish Coats you really are using the best!

**Total Flexibility,
Total Quality,
Total Value!**



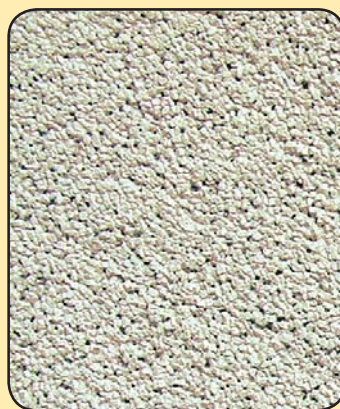
FINISH COAT TEXTURES



Shot Blast Fine



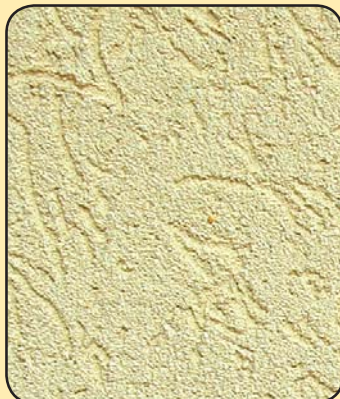
Shot Blast Medium



Shot Blast Coarse



FreeStyle



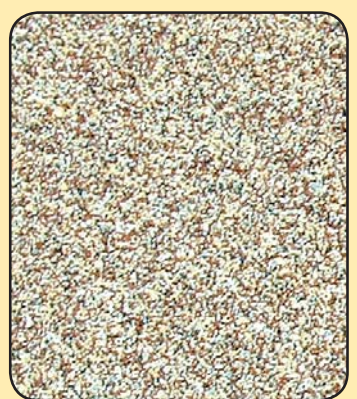
Swirl Fine



Swirl Coarse



Swirl Ultra Coarse



Gemstone

America's EIFS & Stucco Company!

● A Proven Track Record Of Performance And Durability

- Over three decades of EIFS & Stucco industry experience
- Thousands of commercial, residential & hospitality projects completed annually
- Millions of square feet applied from Alaska to Florida

● Outstanding Technical Support And Warranty Coverage

- Knowledgeable and responsive customer service staff
- Wide selection of experienced and qualified applicators
- On-site quality control inspection available
- Wide variety of comprehensive warranties available

● National Code Approvals

- ICC-ES NER-646 and ESR-2771 active and current code reports
- New York MEA Approval and Florida Building Code Approval
- Listed in AIA MasterSpec and CSI SpecData

● Participation And Membership In Associations

- AWCI (Association of the Walls and Ceilings Industries) - Lifetime Member
- ASTM (American Society for Testing and Materials)
- CSI (Construction Specification Institute)
- EDI (Exterior Design Institute)
- FSCT (Federation of Societies for Coatings Technology)
- NWCB (Northwest Walls and Ceilings Bureau)
- NAHB (National Association of Home Builders)
- NOCSA (National One Coat Stucco Association)
- IAQA (Indoor Air Quality Association)
- CADDETAILS.COM
- 4SPECS.COM
- AIA-MASTERSPEC

● Comprehensive Quality And Performance Standards

Products and systems are evaluated to comply with all Model Building Codes including: The International Building Code, The International Residential Code, The National Building Code, The Standard Building Code and The Uniform Building Code. RADCO validated Quality Control Program.

● In-Depth, On-Going Product Testing And Evaluations

- | | |
|--|--|
| Full Scale Impact Loading (ASTM E-695) | Accelerated Weathering (ASTM G-23) |
| Impact Resistance (ASTM D2797) | Freeze/Thaw Resistance (ASTM C67MOD) |
| Compressive Strength (ASTM C-109) | Wind Driven Rain (ASTM E331) |
| Adhesional Bond Strength (ASTM C-209) | Salt Spray Resistance (ASTM B-117) |
| Flexural Strength (ASTM C-203) | Moisture Resistance (ASTM D2247) |
| Tensile Bond Strength (ASTM C 297) | Water Vapor Transmission (ASTM E96) |
| Radiant Heat Fire Test (NFPA 268) | Abrasion Resistance (ASTM D968) |
| ISMA Fire Test (UBC 26-9) | Mildew Resistance (Mil Std 810D) |
| Moisture Drainage (ASTM 331 AC24) | Surface Burning Char. (ASTM E-84) |
| Wind Load (ASTM E-330) | Large Scale Fire Test (ASTM E-108 Mod) |



TOTAL WALL
888.702.9915 totalwall.com

